

Figure 2: ESKOM: Dealesville - Kimberley - Kathu

Boundary to Ulco

Topography Vector Map: Scanned 1:250 000

ENGINEERING GEOLOGICAL SURVEY:

As shown on plan and described in report

Engineering Geological Investigation to determine the potential for the upgrading of Power lines from Dealesville to Kuruman, with Beta to Boundary corridors.

REPORT NUMBER: GS201403KBU DATED: March 2014



Report by:

GEOSET cc

CK 99/65610/23

RAADGEWENDE INGENIEURS- EN OMGEWINGSGEOLOE
CONSULTING ENGINEERING AND ENVIRONMENTAL GEOLOGISTS

POSBUS/PO BOX 60995
KAREN PARK 0118
WEBFAX: 086 658 3190

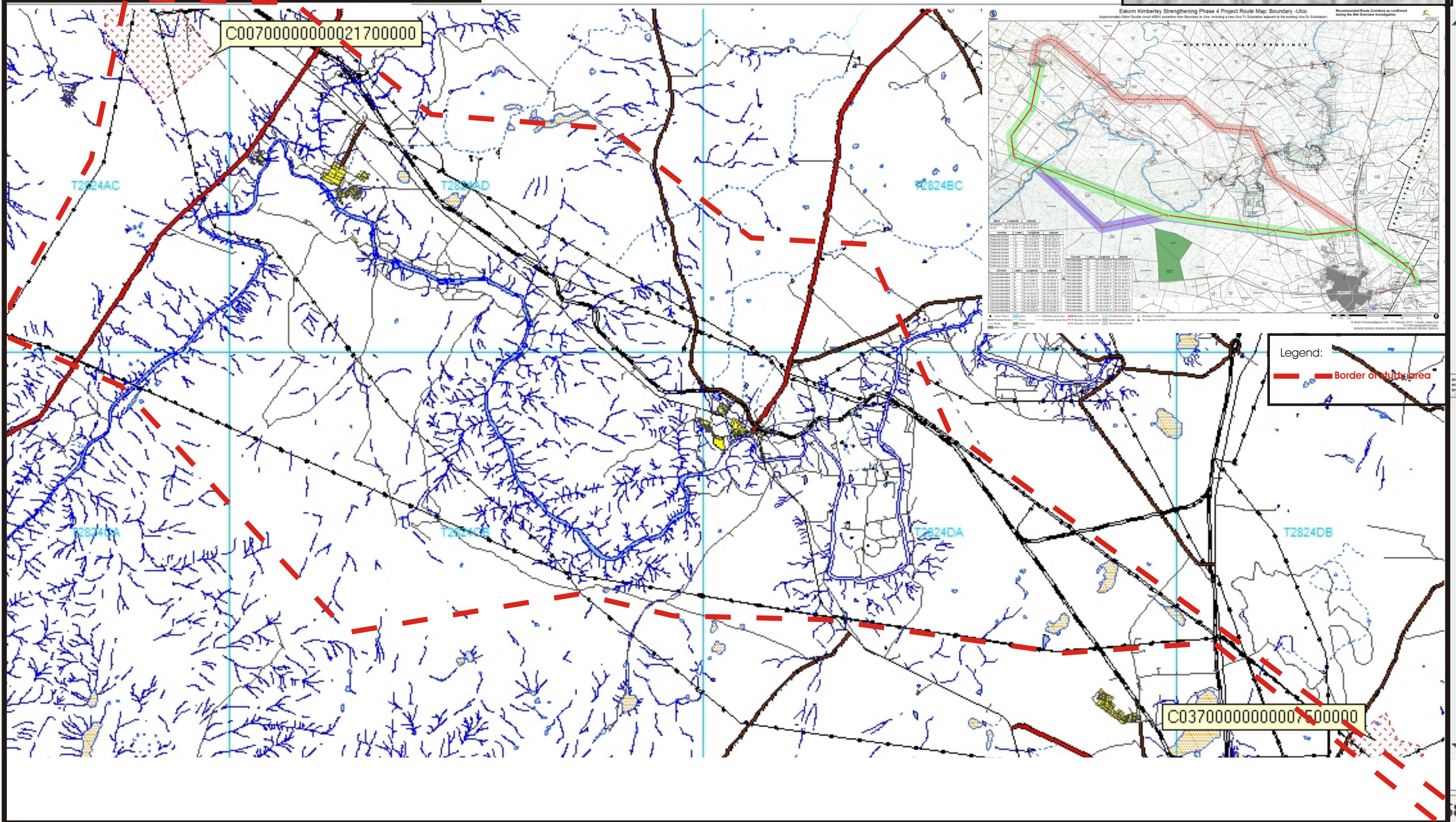
TEL/FAX: (+2712)/(012) 525 1004
CELL: (+2782)/(082) 925 4075
e-mail: davidsvdm@webmail.co.za

Ingenieursgeoloog
Engineering Geologist

David S. van der Merwe

Bsc.(Hons.)(Eng. Geol.), Pr.Sci.Nat.; MSAIEG; MEESG.

Topography Map: 1: 250 000 Kimberley 2824



86°E